

Reliable Hub's Engineering (I) Pvt. Ltd.
Interior Fit out Works

Profile



Contact Details

Reliable Hub's Engineering (I) Pvt Ltd
Interior Fit out Works

RELIABLE HUB'S ENGINEERING (INDIA) PVT. LTD.

Plot no. K-7/1/1, Anand Nagar, MIDC Additional
Ambernath (East) - 421501

Our Mission

Client Satisfaction Through Uncompromised Quality & Time Management

Our Vision

Win, Retain and serve clients by providing best service and solution that enhance lives and empower business by striving hard to cater both Human & Business needs of the Client

Who Are We ?

A team of highly motivated people striving to meet client requirements under the superb guidance and experienced leadership of **Mr. Rajesh Jawale and Mr. Shirish Bedse**. The team of skilled force works to live up to the clients' expectation without any compromise in quality and time schedule.

We have a team of dedicated professionals who endeavor to bring you the design in its fullest form. Passion and commitment are the key factors that give us the edge to meet the Client's requirement.

Backed by superior technology and a creative approach to design, we offer an array of services in the field of Total Interior & Electrical works.

Our service oriented approach helps us to deliver projects with utmost efficiency.

We believe in **TOTAL TEAM WORK**.

Our Clinetele for Retails

- Miniso (30 store)
- Reliance Group
- MR DIY
- Bajaj finance

MR DIY STORE



Cash Back Wall & Cash Counter



Cash Back Wall & Cash Counter



Reliance Jewels

HUB'S
INNOVATION SOLUTION.

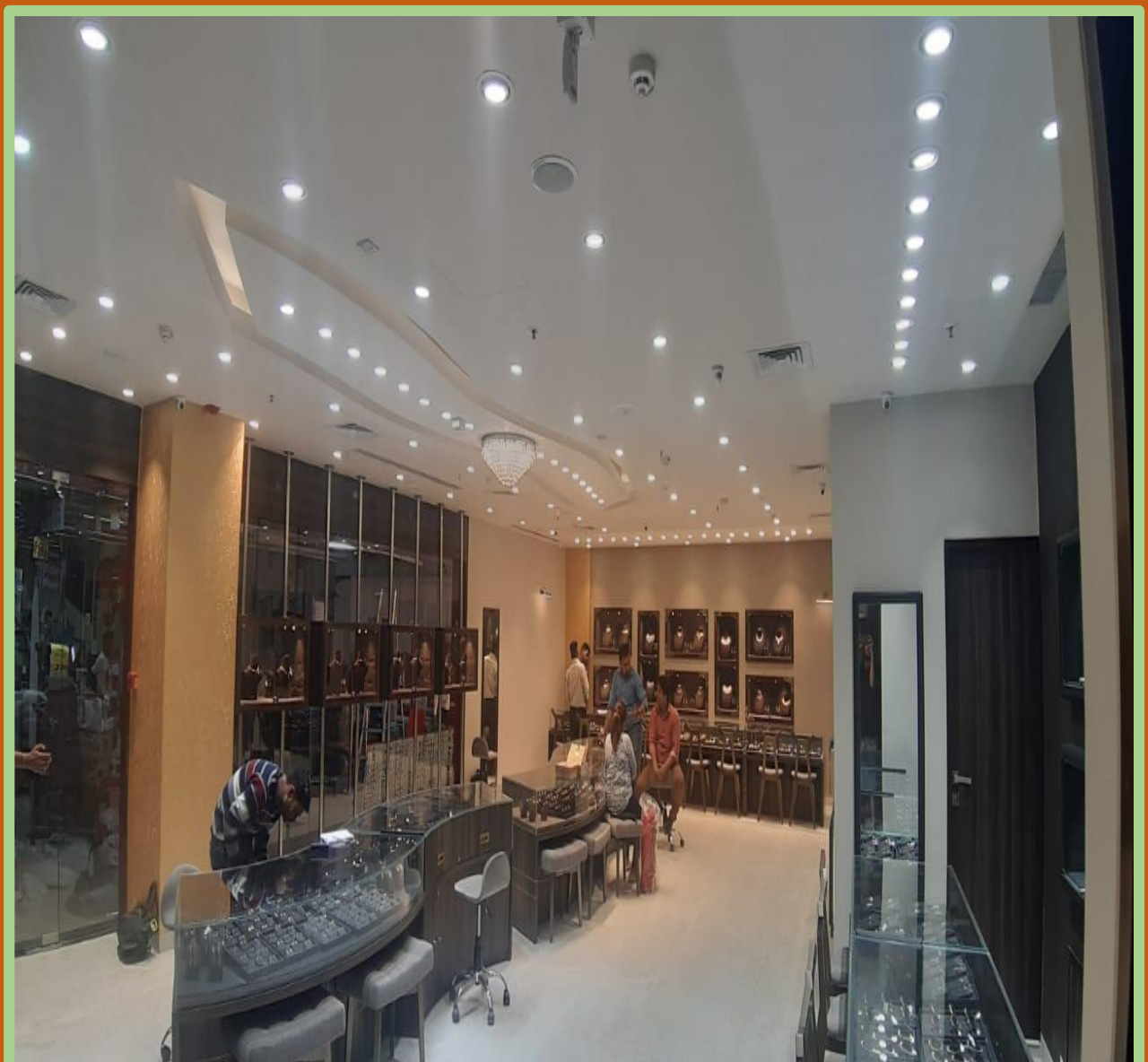
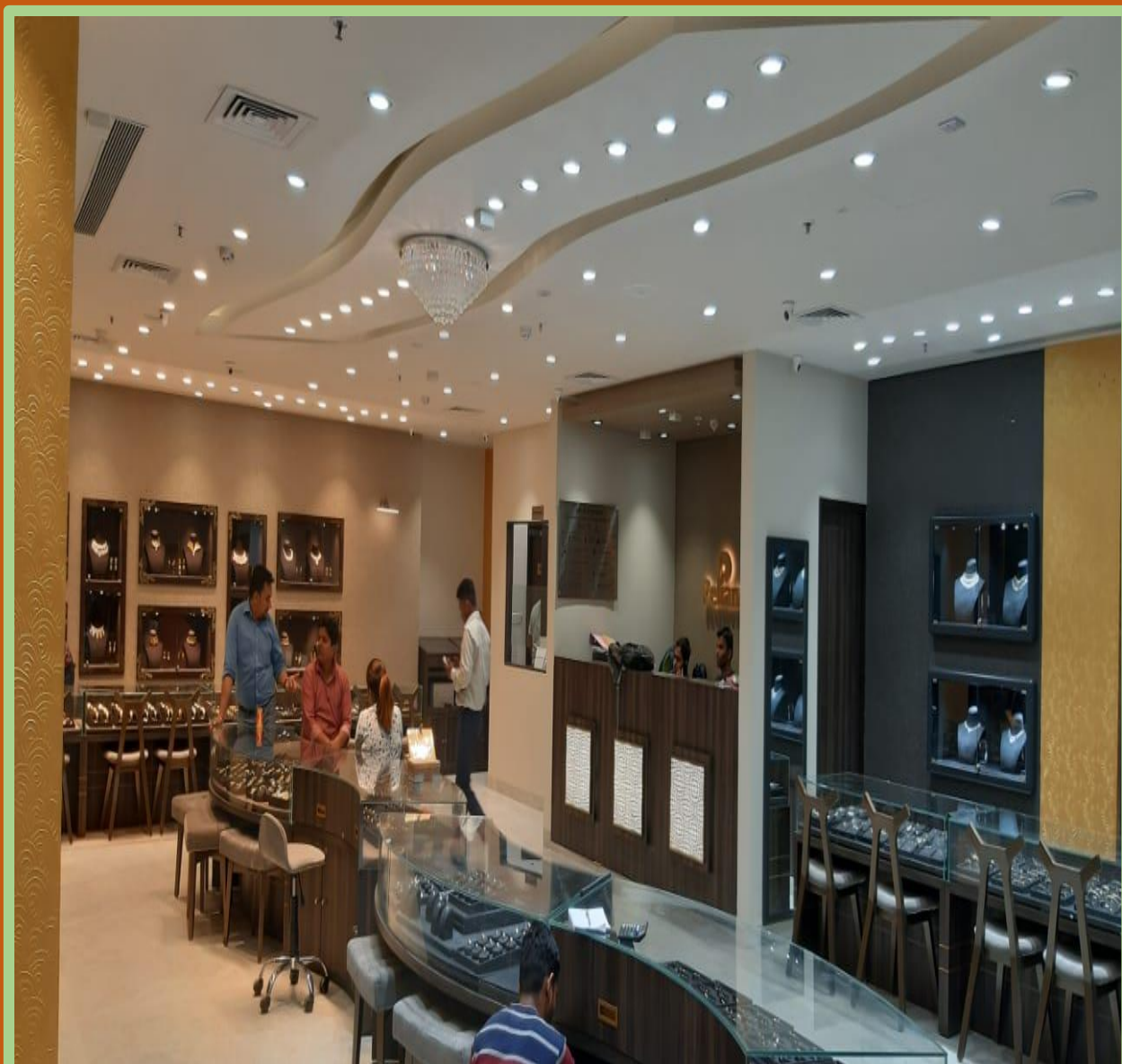




Display portal



Display portal



Display portal



Why Us ?

- Project Management with new technology while retaining traditional approach.
- Monitoring and controlling the project phase with EXPERT Guidance.
- Agile Project leadership
- Working Smarter than Harder.
- Effective People Management with strong Leadership.
- Premium finish with an Eye on Quality

Services

Being a customer centric organization, we are directly accessible 7 days a week for prompt response irrespective of client location through phone and e-mail.

We maintain proper channels of communication and keeps in constant touch with the consultants and clients as required for the successful execution of our projects.

Every project is handled by an experienced Project Manager and a dedicated Site Engineer and is administered by one of the Directors. All projects are monitored on a regular basis to ensure timely completion.

Our Areas Of Expertise

- All retail shelving & wooden fixtures.
- Office furnitures.
- Turnkey Interior Solution
- Project Management
- Civil & Interiors
- Loose furniture
- Electrical
- HVAC
- Fire Fighting
- Plumbing
- ELV & security systems

OUR SERVICES ORGANIZATION OVERVIEW
FOR ALL TYPE OF SERVICES
TRUNKEY PROJECTS

ABOUT US

An exclusive solution provider under one roof for all types of electrical services. The aim of the company is to meet the needs of customer by providing services that set standards in the region. Stringent Quality control and supervision ensure that services confirm to the highest standards of Quality and Reliability. The hands on approach of the field experts together with a strong team of Engineers & Managers and fully qualified specialists operating in all area of trunking projects.

SERVICES

➤ SUBSTATION WORKS-

SITC (Supply, Installation, Testing & Commissioning) of Sub Stations of 400kV/220kV/132kV/100kV





SERVICES

➤ INDUSTRIAL WORKS-

New L.T. & H.T. Connections with liasioning



SERVICES

➤ SERVICES WORKS-

Electrification of Industries, Commercials, Retails and Residential.



SERVICES

- **Infrastructure planning and implementing**
- **Server Installation and Configuration**
- **Server and Client Connectivity**



- **CCTV Surveillance and Access Control System Installation and Maintenance.**



NETWORKS AUDIT DESIGN & IMPLEMENTATION

- Structured Cabling Solutions
- Wired & Wireless Network Survey
- Implementation Of Wired and Wireless Networks & Architecture Design
- Network Audit, Report & Recommendation



OUR ESTEEMED CLIENTS



Vijay Gas Industry P. Ltd.

"We Discover your Needs"

OUR MAJOR WORKS

- LOI Work of Augmentation of Substation by replacement of 315 MVA(3x105 MVA) 400/220Kv ICT BY 501MVA (3x167 MVA) ICT at 400Kv R.S. Substation, Dhule. Dist-Dhule (MSETCL)
- Provision of power supply to coin, currency and card based ATVMS on Mumbai Division and rewiring of FA & CAO office (CENTRAL RAILWAY)
- Work of replacement of 220Kv ACDB & DCDB at 220KV Colourchem substation under EHV O&M Division Bhandup.
- Work of replacement of existing street light poles of residential colony at 220Kv Parvati substation under EHV O&M Dn-I Pune.

OUR MAJOR WORKS

- Work of replacement of old equipments and erection of new equipments along with civil& allied work at various sub-stations under EHV O&M Division, Latur.
- Improvement of circulating area, goods shed, remote operation of pumps, illumination/wiring of booking office, extended COP, FOB and other electrical works at various location in Pune Division
- Survey, Dismantling of existing Meters, Fixing & commissioning of new Embedded Energy Meter with built in modem on consumer premises having load more than 20kW as per detailed scope mentioned, inclusive installation of additional LT XLPE cable, jointing kit along with accessories.
- Work of augmentation by replacement of 2x25 MVA, 132/33Kv T/Fs by 2x50 MVA, 132/33Kv T/Fs at 132Kv BAWADA substation Under EHV O & M Dn Baramati

OUR VALUABLE CLIENTS



OUR VALUABLE CLIENTS



Since 1986

BARI METAL FINISHERS PVT. LTD.

MANUFACTURER OF STEEL ROLLER
SPECIALIST IN HARD CHROME PLATING AND SUPER FINISHING



R. K. ENGINEERING WORKS



OM TECHNO ENGINEERS

OUR VALUABLE CLIENTS



Thank you



RELIABLE HUB'S ENGINEERING (INDIA) PVT. LTD.

Plot no. K- 7/1/1, Anand Nagar, MIDC Additional
Ambarnath (East)- 421501

Tel: +91 9321664341 / 9321664350

Email: sales@reliablehubs.com.

rajesh@reliablehubs.com.

Website: <http://www.reliablehubs.com>